

THE FUTURE LOOKS BRIGHT

Planning for a bigger and better Sydney Children's Hospitals Network

Over the coming years, the Sydney Children's Hospitals Network will embark on \$1.3 billion worth of redevelopment; resulting in expanded and improved healthcare facilities for patients, families and staff.

Located on two thriving, world-class health and education precincts, redevelopments at Sydney Children's Hospital, Randwick (SCH) and The Children's Hospital at Westmead (CHW) will significantly improve the way we care for current and future generations of sick and injured children in NSW.

What is planned for The Children's Hospital at Westmead Redevelopment?

In March 2019, the NSW Government announced funding for a new Paediatric Services Building (PSB). This is in addition to the Central Acute Services Building (CASB), which is currently under construction. These two projects are part of an expansion of children's health services at Westmead.

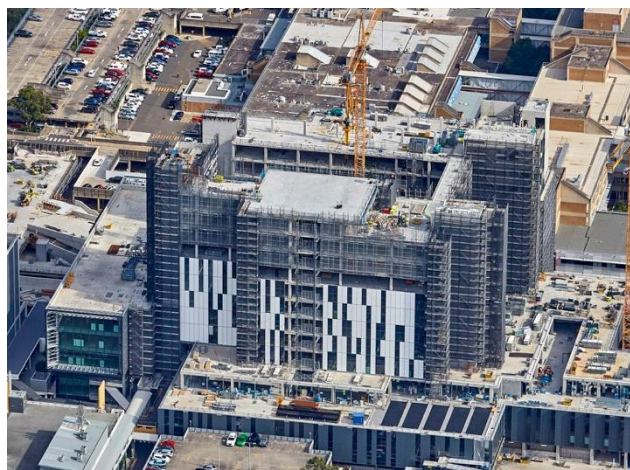
The CASB, opening in late 2020, is part of the Westmead Redevelopment Project. It will function as a shared building between The Children's Hospital at Westmead (CHW), Westmead Hospital and the University of Sydney.

For CHW, it will mean a relocated and expanded Emergency Department, Short Stay Unit; four additional Digital Operating Theatres; and satellite Pharmacy and Medical Imaging services.

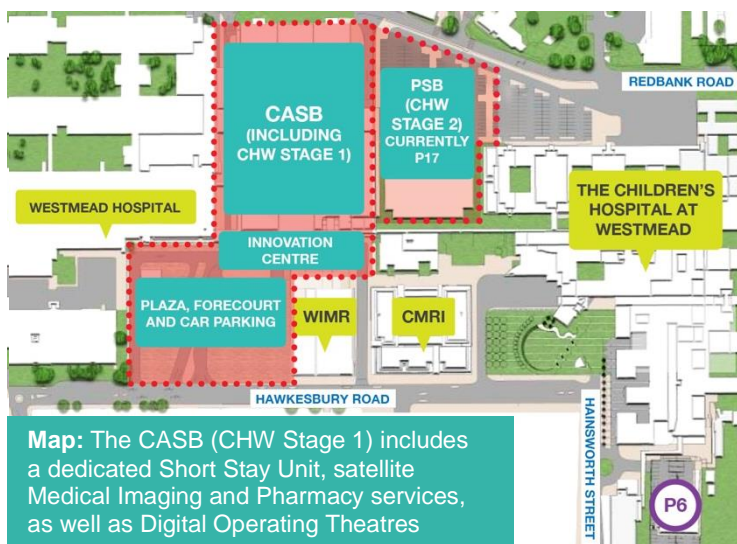
The PSB will feature an expansion of acute paediatric services.



Artist's impression:
CHW Stage 1: Central Acute Services Building



April 23, 2019: The CASB includes a new, expanded children's Emergency Department



Map: The CASB (CHW Stage 1) includes a dedicated Short Stay Unit, satellite Medical Imaging and Pharmacy services, as well as Digital Operating Theatres

When will the buildings open?

Stage 1: The CASB is currently under construction and will open late 2020.

Stage 2: Extensive planning is required before construction on the PSB – which will take several years to complete – begins.

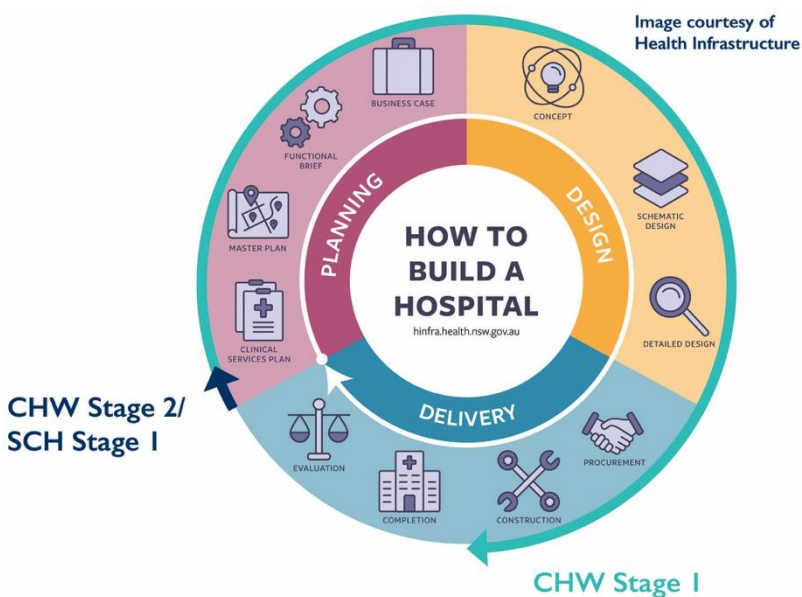
What happens now?

CHW Stage 1: The Hospital's Change and Transition team is busy planning for the future. A series of Project User Groups (PUGs) have been working with the planning staff to finalise their Models of Care in the new building. This work will continue in 2019 alongside procurement and commissioning ahead of the opening date.

CHW Stage 2: Design and planning work will begin in September 2019. The planned location of the PSB is where the current CHW staff car park (P17) is located. A suitable site for the relocation of this car park will form a significant part of the early planning work for CHW Stage 2.

Overall vision and looking ahead: The further investment in CHW for Stage 2 will greatly increase capacity at the Hospital. It will deliver new and expanded health services for our State's sickest children.

"CHW Stages 1 and 2 and SCH Stage 1 represent a very significant change to how our network operates. It's a big change but one we are comprehensively preparing for." – **Cheryl McCullagh, Acting Chief Executive, Sydney Children's Hospitals Network**



What services will be located in the new buildings?

Central Acute Services Building (late 2020)

- CHW Emergency Department (ED)
- Short Stay Unit
- Satellite Medical Imaging and Pharmacy services
- Four additional Digital Operating Theatres

Paediatric Services Building

- Operating Theatres
- Neonatal Intensive Care Unit (NICU)
- Paediatric Intensive Care Unit (PICU)
- Cancer services
- Pharmacy Department
- Expansion of Pathology services
- Mental Health inpatient and ambulatory care
- Car parking
- Other services to be determined

Road and site works are being undertaken to support the redevelopments across the Westmead Precinct.

JOIN US ON THIS JOURNEY

We can all play a role in building the future of the Sydney Children's Hospitals Network.

Please talk to staff, patients, families and community members about what we need to plan for the future of our kids.

To provide feedback or for more information, speak to your clinical program director, a member of the planning team or email SCHN-Plan@health.nsw.gov.au.

Redevelopment news will be regularly communicated in person, via email or intranet.